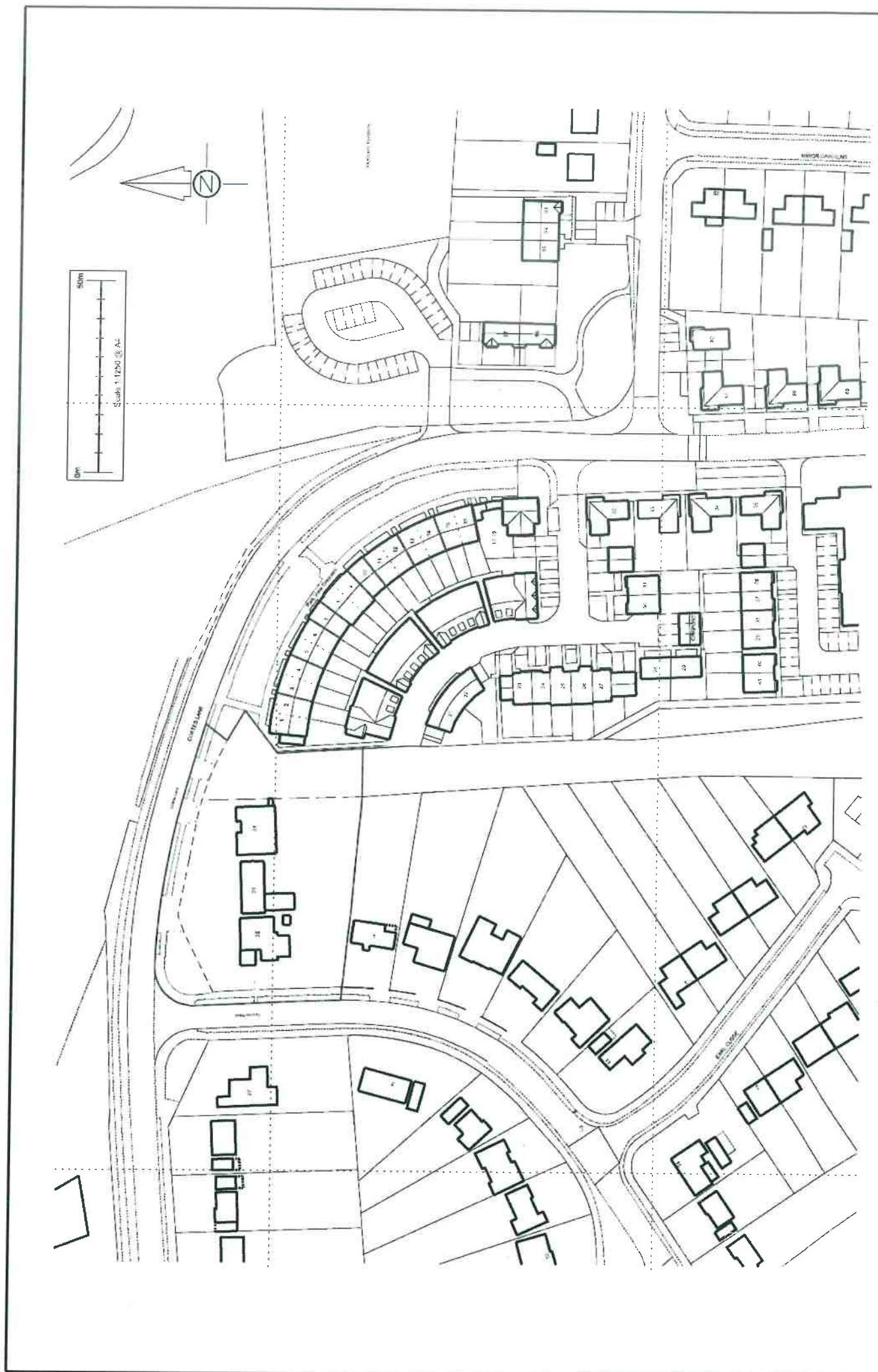
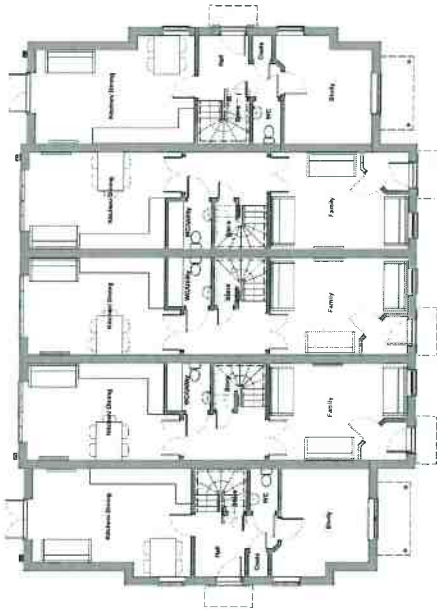


18/08206/FUL
Scale 1/2500





This document is the property of David Parker Architects. It is not to be used for any other purpose without the written consent of David Parker Architects. The design is subject to change without notice. No liability is accepted for any loss or damage arising from the use of this document.



BLOCK 1 (EASTERN)
BLOCK 2 (WESTERN)

PLOT 1
PLOT 6

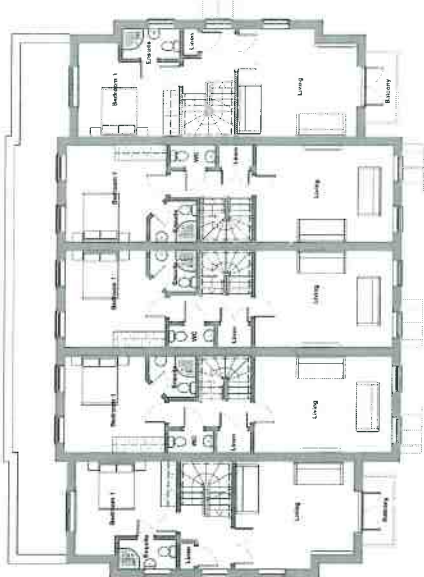
PLOT 2
PLOT 7

PLOT 3
PLOT 8

PLOT 4
PLOT 9

PLOT 5
PLOT 10

GROUND FLOOR PLAN



BLOCK 1 (EASTERN)
BLOCK 2 (WESTERN)

PLOT 1
PLOT 6

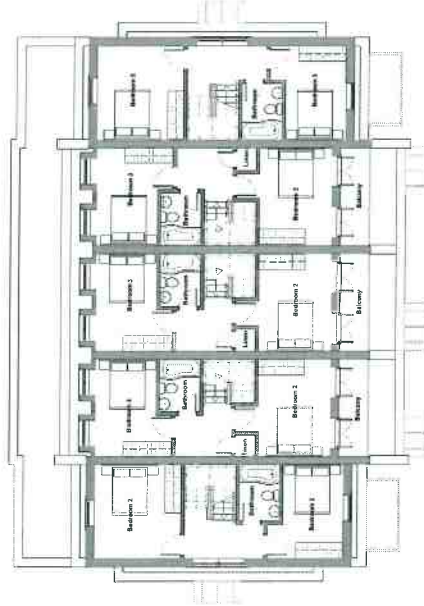
PLOT 2
PLOT 7

PLOT 3
PLOT 8

PLOT 4
PLOT 9

PLOTS
PLOT 10

FIRST FLOOR PLAN



BLOCK 2 (WESTERN)
BLOCK 1 (EASTERN)

PLOT 5
PLOT 1

PLOT 7
PLOT 2

PLOT 8
PLOT 3

PLOT 9
PLOT 4

PLOT 10
PLOTS 5

SECOND FLOOR PLAN

PLOT 1 = 131 SOM (1410 SQFT)
PLOT 2 = 139 SOM (1495 SQFT)
PLOT 3 = 139 SOM (1495 SQFT)
PLOT 4 = 139 SOM (1495 SQFT)
PLOT 5 = 139 SOM (1495 SQFT)
PLOT 6 = 131 SOM (1410 SQFT)
PLOT 7 = 139 SOM (1495 SQFT)
PLOT 8 = 139 SOM (1495 SQFT)
PLOT 9 = 139 SOM (1495 SQFT)
PLOT 10 = 131 SOM (1410 SQFT)
TOTAL = 1358 SOM (14610 SQFT)



Scale - 1:100@A1

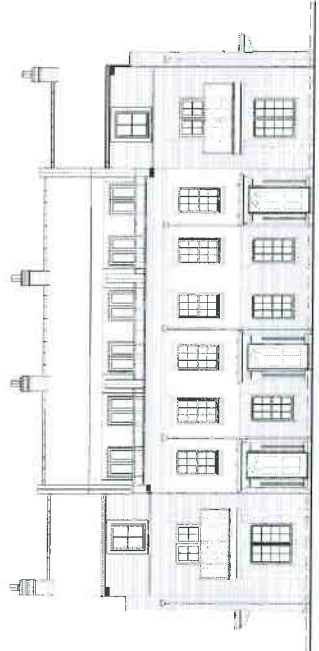
External Materials
Roofs - Slates at 30° pitch
77.5" wide Mansard eaves
Walls - Selected multi-lead stock facing brick
Fenestration - High performance timber or aluminium colour to be selected
Balustrades - Glass balustrading in dark grey powder coated.

No.	Date	Drawn by	Checked by
1	22/03/24	MBL/CDT/D	MBL/CDT/D
2	22/03/24	MBL/CDT/D	MBL/CDT/D
3	22/03/24	MBL/CDT/D	MBL/CDT/D
4	22/03/24	MBL/CDT/D	MBL/CDT/D
5	22/03/24	MBL/CDT/D	MBL/CDT/D

dp architects
design | planning | construction
RIVY #1

LEYWOOD DEVELOPMENT LTD.
21 - 25 COATES LANE
HIGH WYCOMBE
HP13 3EY

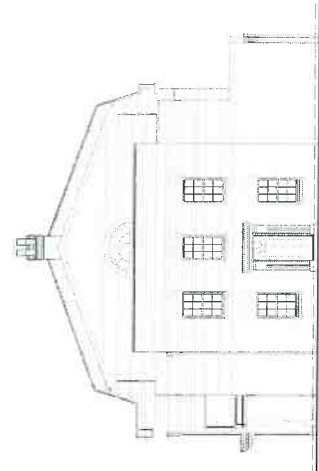
Project	PROPOSED UNITS 1 - 10 FLOOR PLANS
Draw No	17 COA PE09
Rev	D
Date	20/03/24
Author	MBL/CDT/D
Check	MBL/CDT/D
Discipline	PLANNING



BLOCK 1 (EASTERN)
BLOCK 2 (WESTERN)

PLOT 1 PLOT 2 PLOT 3 PLOT 4 PLOT 5
PLOT 6 PLOT 7 PLOT 8 PLOT 9 PLOT 10

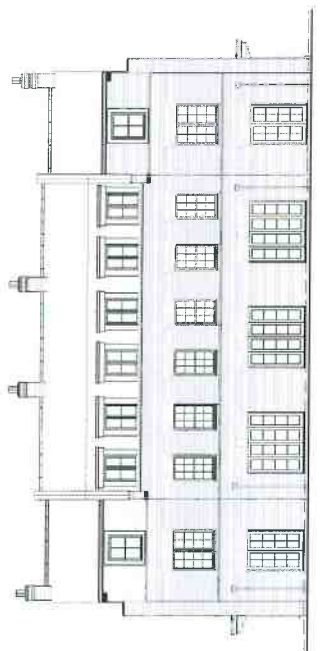
FRONT ELEVATION



BLOCK 1 (EASTERN)
BLOCK 2 (WESTERN)

PLOT 5
PLOT 10

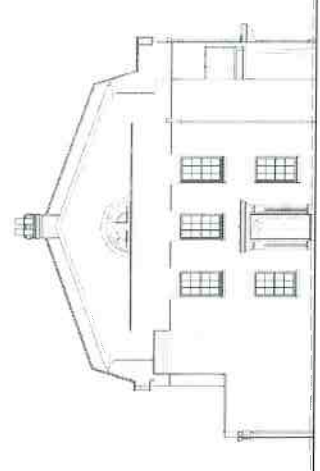
RHS FLANK ELEVATION



BLOCK 1 (EASTERN)
BLOCK 2 (WESTERN)

PLOT 4 PLOT 5 PLOT 9 PLOT 10
PLOT 1 PLOT 2 PLOT 3 PLOT 6 PLOT 7 PLOT 8

REAR ELEVATION



BLOCK 1 (EASTERN)
BLOCK 2 (WESTERN)

PLOT 1
PLOT 6

LHS FLANK ELEVATION



Scale - 1:100@A1

- External Materials**
- Roofs : Slates at 20° pitch
: 72.5° pitch Mansard element
 - Walls : Selected multi-lead stock facing brick
 - Fenestration : High performance timber or powder coated thermal aluminium colour to be selected in accordance with the design in dark grey
 - Balustrade : Ironwork frame

1	REVISED	17 COA PE10
2	REVISED	17 COA PE10
3	REVISED	17 COA PE10
4	REVISED	17 COA PE10
5	REVISED	17 COA PE10
6	REVISED	17 COA PE10
7	REVISED	17 COA PE10
8	REVISED	17 COA PE10
9	REVISED	17 COA PE10
10	REVISED	17 COA PE10
11	REVISED	17 COA PE10
12	REVISED	17 COA PE10
13	REVISED	17 COA PE10
14	REVISED	17 COA PE10
15	REVISED	17 COA PE10
16	REVISED	17 COA PE10
17	REVISED	17 COA PE10
18	REVISED	17 COA PE10
19	REVISED	17 COA PE10
20	REVISED	17 COA PE10
21	REVISED	17 COA PE10
22	REVISED	17 COA PE10
23	REVISED	17 COA PE10
24	REVISED	17 COA PE10
25	REVISED	17 COA PE10
26	REVISED	17 COA PE10
27	REVISED	17 COA PE10
28	REVISED	17 COA PE10
29	REVISED	17 COA PE10
30	REVISED	17 COA PE10
31	REVISED	17 COA PE10
32	REVISED	17 COA PE10
33	REVISED	17 COA PE10
34	REVISED	17 COA PE10
35	REVISED	17 COA PE10
36	REVISED	17 COA PE10
37	REVISED	17 COA PE10
38	REVISED	17 COA PE10
39	REVISED	17 COA PE10
40	REVISED	17 COA PE10
41	REVISED	17 COA PE10
42	REVISED	17 COA PE10
43	REVISED	17 COA PE10
44	REVISED	17 COA PE10
45	REVISED	17 COA PE10
46	REVISED	17 COA PE10
47	REVISED	17 COA PE10
48	REVISED	17 COA PE10
49	REVISED	17 COA PE10
50	REVISED	17 COA PE10
51	REVISED	17 COA PE10
52	REVISED	17 COA PE10
53	REVISED	17 COA PE10
54	REVISED	17 COA PE10
55	REVISED	17 COA PE10
56	REVISED	17 COA PE10
57	REVISED	17 COA PE10
58	REVISED	17 COA PE10
59	REVISED	17 COA PE10
60	REVISED	17 COA PE10
61	REVISED	17 COA PE10
62	REVISED	17 COA PE10
63	REVISED	17 COA PE10
64	REVISED	17 COA PE10
65	REVISED	17 COA PE10
66	REVISED	17 COA PE10
67	REVISED	17 COA PE10
68	REVISED	17 COA PE10
69	REVISED	17 COA PE10
70	REVISED	17 COA PE10
71	REVISED	17 COA PE10
72	REVISED	17 COA PE10
73	REVISED	17 COA PE10
74	REVISED	17 COA PE10
75	REVISED	17 COA PE10
76	REVISED	17 COA PE10
77	REVISED	17 COA PE10
78	REVISED	17 COA PE10
79	REVISED	17 COA PE10
80	REVISED	17 COA PE10
81	REVISED	17 COA PE10
82	REVISED	17 COA PE10
83	REVISED	17 COA PE10
84	REVISED	17 COA PE10
85	REVISED	17 COA PE10
86	REVISED	17 COA PE10
87	REVISED	17 COA PE10
88	REVISED	17 COA PE10
89	REVISED	17 COA PE10
90	REVISED	17 COA PE10
91	REVISED	17 COA PE10
92	REVISED	17 COA PE10
93	REVISED	17 COA PE10
94	REVISED	17 COA PE10
95	REVISED	17 COA PE10
96	REVISED	17 COA PE10
97	REVISED	17 COA PE10
98	REVISED	17 COA PE10
99	REVISED	17 COA PE10
100	REVISED	17 COA PE10



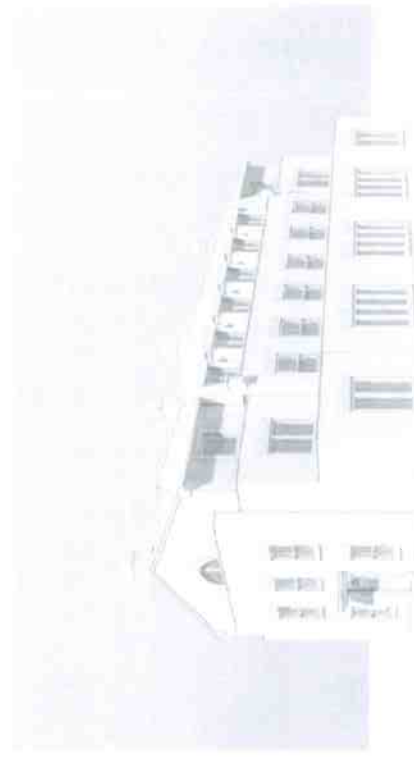
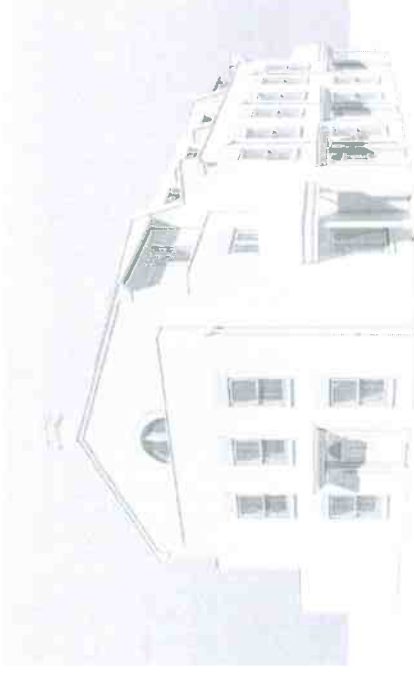
21 - 25 COATES LANE
HIGH WYCOMBE
HP13 3EY

LEYWOOD DEVELOPMENT LTD.

PROPOSED UNITS 1 - 10
ELEVATIONS

17 COA PE10
D

PLANNING



External Materials

- Roofs**
 - Slates at 20° pitch
 - 72.5° pitch Mansard element
- Walls**
 - Selected multi-red stock facing brick
- Fenestration**
 - High performance timber or powder coated thermal aluminium colour to be selected
 - Glass balustrading in dark grey ironwork frames.
- Balustrade**

1	WALL COMPARTMENTATION	BRICK
2	WALL COMPARTMENTATION	BRICK
3	WALL COMPARTMENTATION	BRICK
4	WALL COMPARTMENTATION	BRICK
5	WALL COMPARTMENTATION	BRICK
6	WALL COMPARTMENTATION	BRICK
7	WALL COMPARTMENTATION	BRICK
8	WALL COMPARTMENTATION	BRICK
9	WALL COMPARTMENTATION	BRICK
10	WALL COMPARTMENTATION	BRICK
11	WALL COMPARTMENTATION	BRICK
12	WALL COMPARTMENTATION	BRICK
13	WALL COMPARTMENTATION	BRICK
14	WALL COMPARTMENTATION	BRICK
15	WALL COMPARTMENTATION	BRICK
16	WALL COMPARTMENTATION	BRICK
17	WALL COMPARTMENTATION	BRICK
18	WALL COMPARTMENTATION	BRICK
19	WALL COMPARTMENTATION	BRICK
20	WALL COMPARTMENTATION	BRICK
21	WALL COMPARTMENTATION	BRICK
22	WALL COMPARTMENTATION	BRICK
23	WALL COMPARTMENTATION	BRICK
24	WALL COMPARTMENTATION	BRICK
25	WALL COMPARTMENTATION	BRICK
26	WALL COMPARTMENTATION	BRICK
27	WALL COMPARTMENTATION	BRICK
28	WALL COMPARTMENTATION	BRICK
29	WALL COMPARTMENTATION	BRICK
30	WALL COMPARTMENTATION	BRICK
31	WALL COMPARTMENTATION	BRICK
32	WALL COMPARTMENTATION	BRICK
33	WALL COMPARTMENTATION	BRICK
34	WALL COMPARTMENTATION	BRICK
35	WALL COMPARTMENTATION	BRICK
36	WALL COMPARTMENTATION	BRICK
37	WALL COMPARTMENTATION	BRICK
38	WALL COMPARTMENTATION	BRICK
39	WALL COMPARTMENTATION	BRICK
40	WALL COMPARTMENTATION	BRICK
41	WALL COMPARTMENTATION	BRICK
42	WALL COMPARTMENTATION	BRICK
43	WALL COMPARTMENTATION	BRICK
44	WALL COMPARTMENTATION	BRICK
45	WALL COMPARTMENTATION	BRICK
46	WALL COMPARTMENTATION	BRICK
47	WALL COMPARTMENTATION	BRICK
48	WALL COMPARTMENTATION	BRICK
49	WALL COMPARTMENTATION	BRICK
50	WALL COMPARTMENTATION	BRICK
51	WALL COMPARTMENTATION	BRICK
52	WALL COMPARTMENTATION	BRICK
53	WALL COMPARTMENTATION	BRICK
54	WALL COMPARTMENTATION	BRICK
55	WALL COMPARTMENTATION	BRICK
56	WALL COMPARTMENTATION	BRICK
57	WALL COMPARTMENTATION	BRICK
58	WALL COMPARTMENTATION	BRICK
59	WALL COMPARTMENTATION	BRICK
60	WALL COMPARTMENTATION	BRICK
61	WALL COMPARTMENTATION	BRICK
62	WALL COMPARTMENTATION	BRICK
63	WALL COMPARTMENTATION	BRICK
64	WALL COMPARTMENTATION	BRICK
65	WALL COMPARTMENTATION	BRICK
66	WALL COMPARTMENTATION	BRICK
67	WALL COMPARTMENTATION	BRICK
68	WALL COMPARTMENTATION	BRICK
69	WALL COMPARTMENTATION	BRICK
70	WALL COMPARTMENTATION	BRICK
71	WALL COMPARTMENTATION	BRICK
72	WALL COMPARTMENTATION	BRICK
73	WALL COMPARTMENTATION	BRICK
74	WALL COMPARTMENTATION	BRICK
75	WALL COMPARTMENTATION	BRICK
76	WALL COMPARTMENTATION	BRICK
77	WALL COMPARTMENTATION	BRICK
78	WALL COMPARTMENTATION	BRICK
79	WALL COMPARTMENTATION	BRICK
80	WALL COMPARTMENTATION	BRICK
81	WALL COMPARTMENTATION	BRICK
82	WALL COMPARTMENTATION	BRICK
83	WALL COMPARTMENTATION	BRICK
84	WALL COMPARTMENTATION	BRICK
85	WALL COMPARTMENTATION	BRICK
86	WALL COMPARTMENTATION	BRICK
87	WALL COMPARTMENTATION	BRICK
88	WALL COMPARTMENTATION	BRICK
89	WALL COMPARTMENTATION	BRICK
90	WALL COMPARTMENTATION	BRICK
91	WALL COMPARTMENTATION	BRICK
92	WALL COMPARTMENTATION	BRICK
93	WALL COMPARTMENTATION	BRICK
94	WALL COMPARTMENTATION	BRICK
95	WALL COMPARTMENTATION	BRICK
96	WALL COMPARTMENTATION	BRICK
97	WALL COMPARTMENTATION	BRICK
98	WALL COMPARTMENTATION	BRICK
99	WALL COMPARTMENTATION	BRICK
100	WALL COMPARTMENTATION	BRICK

dp architects
 design planning architecture

RIBA
 RIBA 2014

LEYWOOD DEVELOPMENT LTD.

**21 - 25 COATES LANE
 HIGH WYCOMBE
 HP13 3EY**

**PROPOSED UNITS 1 -10
 3D VIEWS**

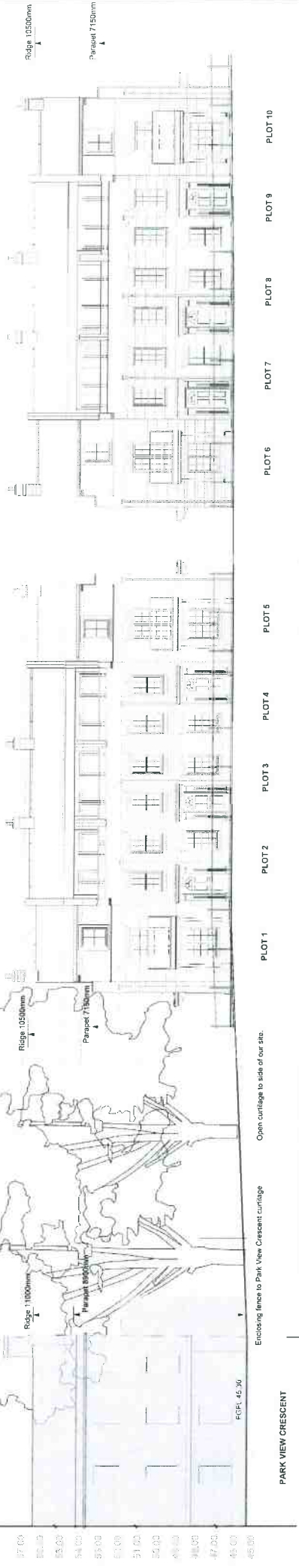
Scale	1:100	Rev	D
Drawn	CHJ/HF		
Check	30/11/17		

PLANNING

Scale - 1:100@A1

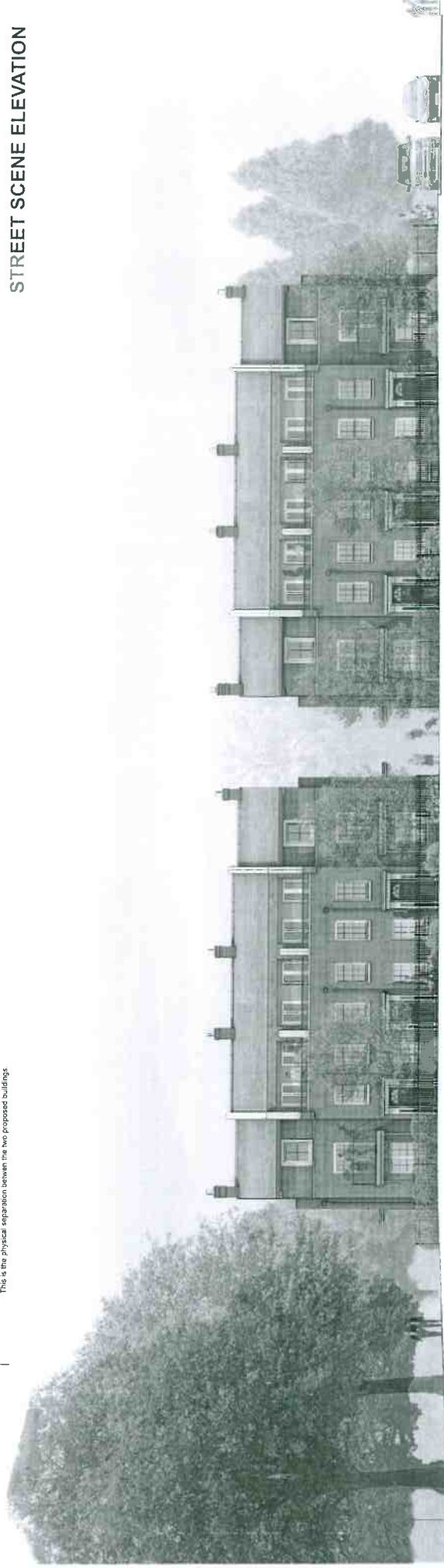


Please note: as the roof descends (to Plot 1 - 6) ascending with slope above 6.5m compared to the parapet of Park View Crescent at 8.0m, these gables will require sub-structure, and therefore roof heights are 0.5m lower with pitched roof solution.



STREET SCENE ELEVATION

21 Coates Lane approximately 0.3m higher following the natural slope of Coates Lane



FRONT ELEVATION

No.	Date	Revised/Issue	Notes
A	12/03/17	PROPOSED PARAMET	
B	15/03/17	PROPOSED PARAMET	
C	15/03/17	PROPOSED PARAMET	
D	05/03/18	PROPOSED PARAMET	

PROPOSED PARAMET
PROPOSED PARAMET
PROPOSED PARAMET
PROPOSED PARAMET

PROPOSED UNITS 1 - 10
STREET SCENE ELEVATION

Drawn	1:100 (A1)	Scale	17 COA SS02
Check	1:100 (A1)	Scale	D
Drawn	1:100 (A1)	Scale	
Check	1:100 (A1)	Scale	

LEYWOOD DEVELOPMENT LTD.
21 - 25 COATES LANE
HIGH WYCOMBE
HP13 3EY

dp architects
design | planning | architecture
RIBA RIA
60 LITTLEWOOD STREET, LEYWOOD, LEYWOOD, LEYWOOD

PLANNING



Key

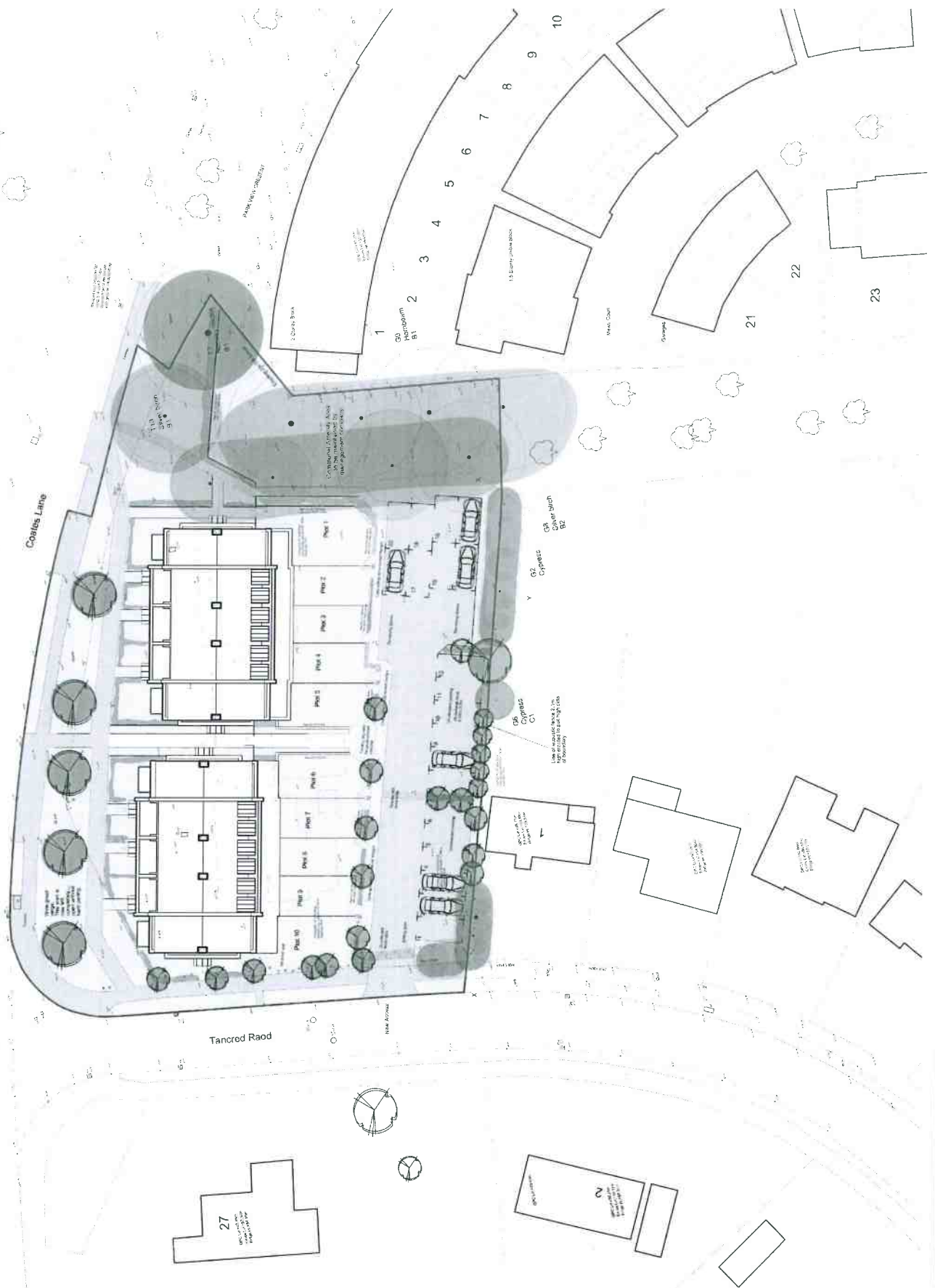
- Proposed Trees
- Tree Removal
- Proposed Landscaping
- F-Path

E 2025/20
 T 10/25/24
 A 10/25/24
 N/A
 N/A
 N/A



LEYWOOD DEVELOPMENT LTD
 21/25 COATES LANE
 HIGH WYCOMBE
 HP13 3EY

PROPOSED SITE PLAN
 17 COA SP05
 E



This plan is submitted in accordance with the provisions of the Town and Country Planning Act 1990 and the Town and Country Planning (Development Management) Regulations 2015. It is intended to be used in conjunction with the Planning Application Form and the Planning Statement. The applicant warrants that the information provided is true and correct to the best of their knowledge and belief. The plan is not to be used for any other purpose without the prior written consent of the architects.